

③ - ZHĚNA NA LŽ,
JDE POČÍTNÝM ZÁKAZNÍČ
28. 07. 2007
ARCHIV

28. 4. 2017

LM/H/00376

4

STAV PODANI :
DEX OKUJ
NASTOJA PODLENA

- ΤΙΣΟΥΨΗΚΑ ΜΑΤΕΡΙΜΑΛ
- ΝΕΚΡΟΤΩΝΑΝΕ ΠΟΛΟΝΕΡΥ
- ΠΟΛΟΝΕΡΥ ΕΒΝΑΓ

NOTA :

- Metal sheet thickness : 8 mm
- Radii without dimension : $R = 10$
- Bend radii : $R = 8$

- Unfolded length (for info) = 1

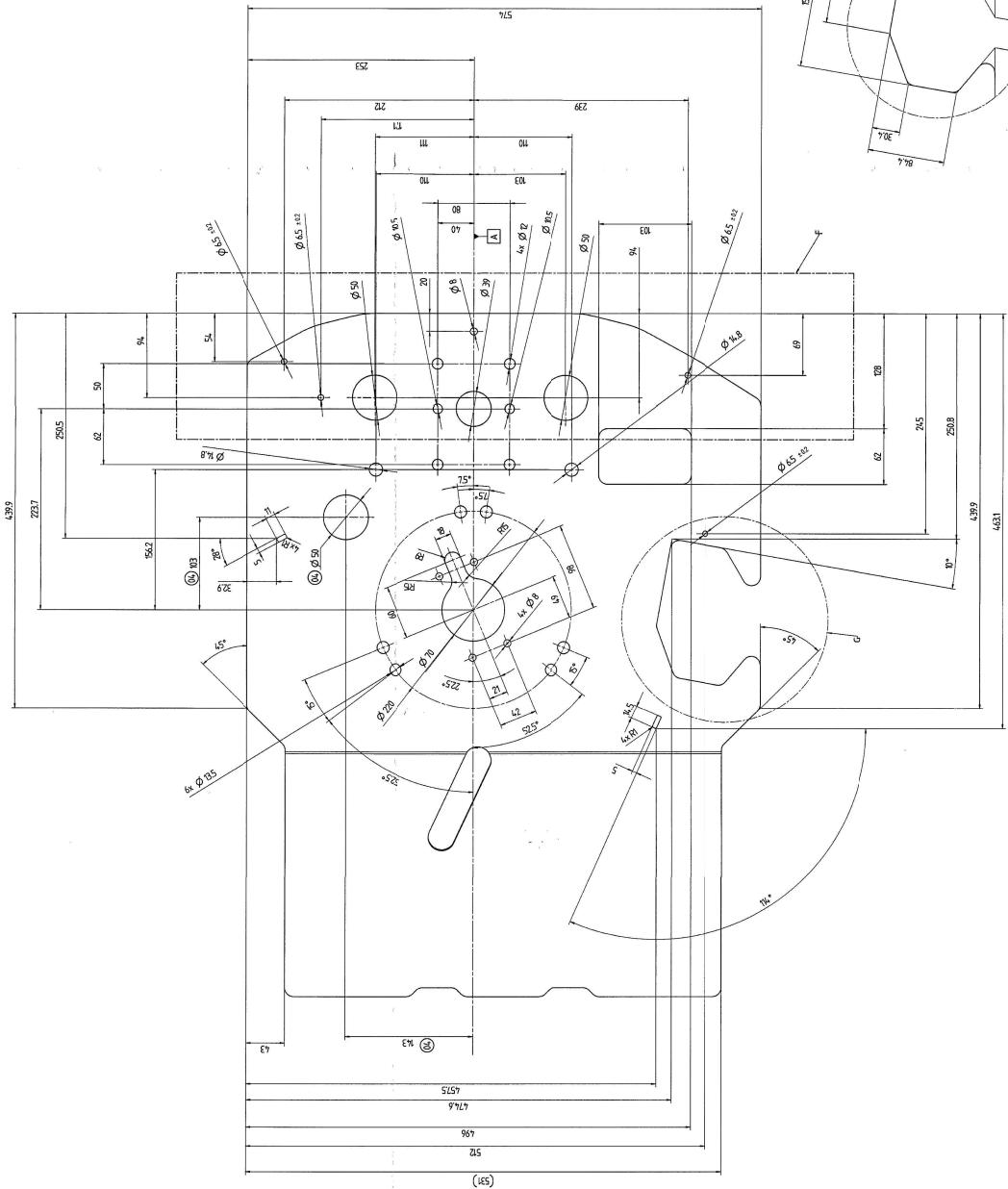
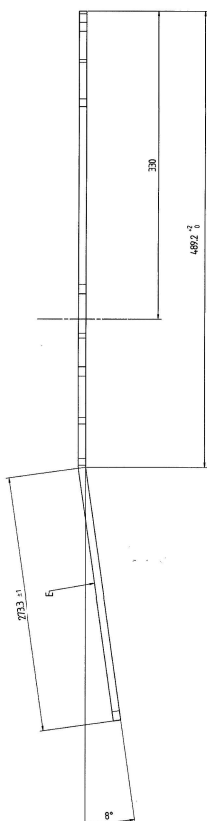
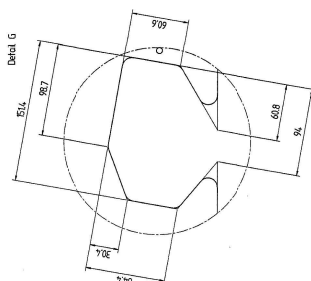
first angle		projection		projection	third angle
general tolerance (μm) in mm			general tolerance (μm) in mm		
tolerance			tolerance		

Inspection date	1000	500	250	125	62.5	31.25	15.625	7.8125	3.90625	1.953125	0.9765625	0.48828125	0.244140625	0.1220703125	0.06103515625	0.030517578125	0.0152587890625	0.00762939453125	0.003814697265625	0.0019073486328125	0.00095367431640625	0.000476837158203125	0.0002384185791015625	0.00011920928955078125	0.000059604644775390625	0.0000298023223876953125	0.00001490116119384765625	0.000007450580596923828125	0.0000037252902984619140625	0.00000186264514923095703125	0.000000931322574615478515625	0.0000004656612873077392578125	0.00000023283064365386962890625	0.000000116415321826934814453125	0.0000000582076609134674072265625	0.00000002910383045673370361328125	0.000000014551915228366851806640625	0.0000000072759576141834259033203125	0.00000000363797880709171295166015625	0.000000001818989403545856475830078125	0.0000000009094947017729282379150390625	0.00000000045474735088646411895751953125	0.000000000227373675443232059478759765625	0.0000000001136868377216160297393798828125	0.00000000005684341886080801486968994140625	0.000000000028421709430404007434844970703125	0.0000000000142108547152020037174224853515625	0.00000000000710542735760100185871124267578125	0.000000000003552713678800500929355621337890625	0.0000000000017763568394002504646778106689453125	0.00000000000088817841970012523233890533447265625	0.000000000000444089209850062616169452667236328125	0.0000000000002220446049250313080847263336181640625	0.00000000000011102230246251565404236316680908203125	0.000000000000055511151231257827021181583394541015625	0.0000000000000277555756156289135105907916972705078125	0.00000000000001387778780781445675529539584863529296875	0.000000000000006938893903907227877647697924317646484375	0.0000000000000034694469519536139388238489621588232421875	0.00000000000000173472347597680696941192448107941162109375	0.000000000000000867361737988403484705962240539705810546875	0.0000000000000004336808689942017423529811202698529052734375	0.00000000000000021684043449710087117649056013492645263671875	0.000000000000000108420217248550435588245280067463226318359375	0.0000000000000000542101086242752177941226400337316131591796875	0.00000000000000002710505431213760889706132001686580657958984375	0.000000000000000013552527156068804448530660008432903289794921875	0.0000000000000000067762635780344022242653300042164516448974609375	0.00000000000000000338813178901720111213266500210822582244873046875	0.0000000000000000016940658945086005560663325010541129112243671875	0.00000000000000000084703294725430027803316625052705645561218359375	0.000000000000000000423516473627150139016583125263528227806091796875	0.0000000000000000002117582368135750695082915626317641139030458984375	0.00000000000000000010587911840678753475414578131588205695152294921875	0.000000000000000000052939559203393767377072890657941028475761474609375	0.0000000000000000000264697796016968836885364453289705142378807373046875	0.00000000000000000001323488980084844178426672266448525711189403685234375	0.000000000000000000006617444900424220892133361332242628555947018426171875	0.0000000000000000000033087224502121104460666806661213142779735092130859375	0.00000000000000000000165436122510605522303334033306065713898675460654296875	0.000000000000000000000827180612553027611516670166530328569493377303271484375	0.0000000000000000000004135903062765138057583350832651642847466886516357421875	0.00000000000000000000020679515313825690287916754163258214237334432581787109375	0.000000000000000000000103397576569128451439583770816291071186672162908935546875	0.0000000000000000000000516987882845642257197918854081455355933360814544677734375	0.00000000000000000000002584939414228211285989594270407276779666804072723388671875	0.000000
-----------------	------	-----	-----	-----	------	-------	--------	--------	---------	----------	-----------	------------	-------------	--------------	---------------	----------------	-----------------	------------------	-------------------	--------------------	---------------------	----------------------	-----------------------	------------------------	-------------------------	--------------------------	---------------------------	----------------------------	-----------------------------	------------------------------	-------------------------------	--------------------------------	---------------------------------	----------------------------------	-----------------------------------	------------------------------------	-------------------------------------	--------------------------------------	---------------------------------------	--	---	--	---	--	---	--	---	--	---	--	---	--	---	--	---	--	---	--	---	--	---	--	---	--	---	--	---	--	---	--	---	--	---	--	---	--	---	--	---	--	---	--	---	--	---	--	----------

1	1	2	4	6	Checked 28.05.2017 12:16
lengths 4) and angle $(1, 2) = \pi/3$					Auth'd 27.05.2017 15:56
Tolerance Symbols ISO 101					Checked 28.05.2017 15:56
Tolerance					

□	straphless/strass = GI
□	concoctive out = GI
□	symmetry = GI
□	conclusion = GI

position = 01	Confidential document Relate to protection under EU
languages NFR	



Tolerance Kéani' Jaserem

LASER cutting tolerances				
NOTES: no cutting radius without dimensions B ± 1 mm unless otherwise specified				
30°	30° < 50°	220° < 450°	450° < 7050°	7050° < 1070°

0,5	±0,8	±1,0	±1,5	±2,0
-----	------	------	------	------
